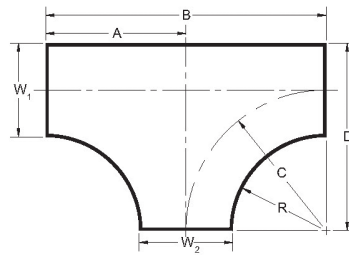
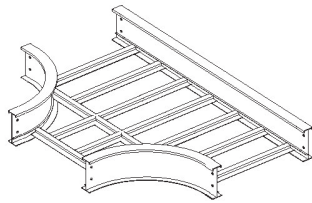


HORIZONTAL TEE



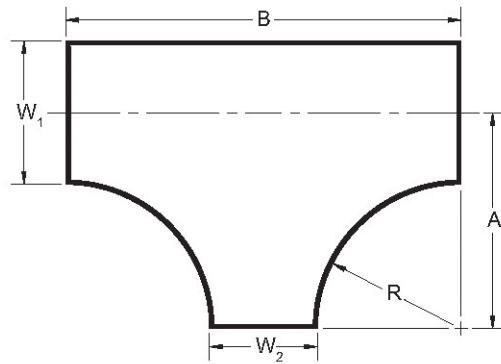
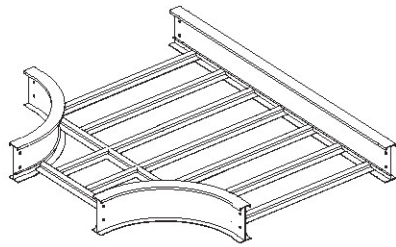
To complete catalogue number insert the appropriate prefixes (2) in place of asterisks.

H	T	A	*	9	5	5	**
BASIC PART	MATERIAL FINISH	SIDERAIL HEIGHT	RADIUS	WIDTH 1	WIDTH 2	RUNG SPACING	
HT - Horizontal Tee	A - Aluminum	1 - C / 90mm (3.5") 2 - C / 152mm (6.0") 4 - D / 114mm (4.5") 5 - D / 152mm (6.0") 7 - E / 114mm (4.5") 8 - E / 152mm (6.0") H - E / 160mm (6.3") 9 - E / 203mm (8.0")	3 - 305mm (12") 6 - 610mm (24") 9 - 915mm (36") * - 1220mm (48")	2 - 150mm (6")† 3 - 203mm (8") 5 - 300mm (12") 6 - 450mm (18") 7 - 600mm (24") 8 - 750mm (30") 9 - 900mm (36")	2 - 150mm (6")† 3 - 203mm (8") 5 - 300mm (12") 6 - 450mm (18") 7 - 600mm (24") 8 - 750mm (30") 9 - 900mm (36")	1 - Solid 2 - Ventilated 4 - Ladder	

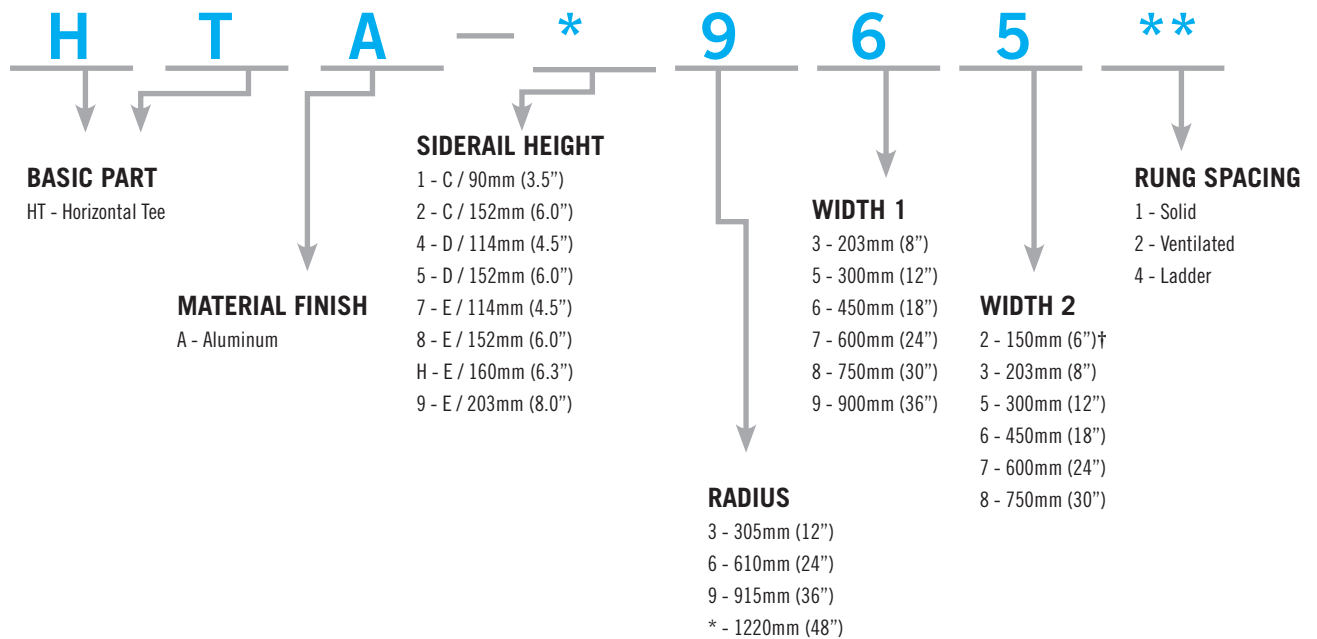
† - Not available in 9 series.

BEND RADIUS		TRAY WIDTH		CATALOGUE #	DIMENSIONS - ALL SIDERAIL HEIGHTS 90mm-203mm							
R		W1/W2			* SIDERAIL HEIGHT ** RUNG SPACING	A		B		C		D
mm	(in)	mm	(in)			mm	(in)	mm	(in)	mm	(in)	mm
305mm	(12")	150	(6)	HTA-(*)322(**)	384	(15.1)	767	(30.2)	384	(15.1)	459	(18.1)
		203	(8)	HTA-(*)333(**)	410	(16.1)	820	(32.3)	410	(16.1)	512	(20.2)
		300	(12)	HTA-(*)355(**)	459	(18.1)	917	(36.1)	459	(18.1)	609	(24.0)
		450	(18)	HTA-(*)366(**)	534	(21.0)	1067	(42.0)	534	(21.0)	759	(29.9)
		600	(24)	HTA-(*)377(**)	609	(24.0)	1217	(47.9)	609	(24.0)	909	(35.8)
		750	(30)	HTA-(*)388(**)	684	(26.9)	1367	(53.8)	684	(26.9)	1059	(41.7)
		900	(36)	HTA-(*)399(**)	759	(29.9)	1517	(59.7)	759	(29.9)	1209	(47.6)
610mm	(24")	150	(6)	HTA-(*)622(**)	684	(26.9)	1367	(53.8)	684	(26.9)	764	(30.1)
		203	(8)	HTA-(*)633(**)	710	(28.0)	1420	(55.9)	710	(28.0)	817	(32.2)
		300	(12)	HTA-(*)655(**)	759	(29.9)	1517	(59.7)	759	(29.9)	914	(36.0)
		450	(18)	HTA-(*)666(**)	834	(32.8)	1667	(65.6)	834	(32.8)	1064	(41.9)
		600	(24)	HTA-(*)677(**)	909	(35.8)	1817	(71.5)	909	(35.8)	1214	(47.8)
		750	(30)	HTA-(*)688(**)	984	(38.7)	1967	(77.4)	984	(38.7)	1364	(53.7)
		900	(36)	HTA-(*)699(**)	1059	(41.7)	2117	(83.3)	1059	(41.7)	1514	(59.6)
915mm	(36")	150	(6)	HTA-(*)922(**)	994	(39.1)	1987	(78.2)	994	(39.1)	1069	(42.1)
		203	(8)	HTA-(*)933(**)	1020	(40.2)	2040	(80.3)	1020	(40.2)	1122	(44.2)
		300	(12)	HTA-(*)955(**)	1069	(42.1)	2137	(84.1)	1069	(42.1)	1219	(48.0)
		450	(18)	HTA-(*)966(**)	1144	(45.0)	2287	(90.0)	1144	(45.0)	1369	(53.9)
		600	(24)	HTA-(*)977(**)	1219	(48.0)	2437	(95.9)	1219	(48.0)	1519	(59.8)
		750	(30)	HTA-(*)988(**)	1294	(50.9)	2587	(101.9)	1294	(50.9)	1669	(65.7)
		900	(36)	HTA-(*)999(**)	1369	(53.9)	2737	(107.8)	1369	(53.9)	1819	(71.6)
1220mm	(48")	150	(6)	HTA-(*)22(**)	1299	(51.1)	2597	(102.2)	1299	(51.1)	1374	(54.1)
		203	(8)	HTA-(*)33(**)	1325	(52.2)	2650	(104.3)	1325	(52.2)	1427	(56.2)
		300	(12)	HTA-(*)55(**)	1374	(54.1)	2747	(108.1)	1374	(54.1)	1524	(60.0)
		450	(18)	HTA-(*)66(**)	1449	(57.0)	2897	(114.1)	1449	(57.0)	1674	(65.9)
		600	(24)	HTA-(*)77(**)	1524	(60.0)	3047	(120.0)	1524	(60.0)	1824	(71.8)
		750	(30)	HTA-(*)88(**)	1599	(63.0)	3197	(125.9)	1599	(63.0)	1974	(77.7)
		900	(36)	HTA-(*)99(**)	1674	(65.9)	3347	(131.8)	1674	(65.9)	2124	(83.6)

HORIZONTAL REDUCING TEE



To complete catalogue number insert the appropriate prefixes (2) in place of asterisks.



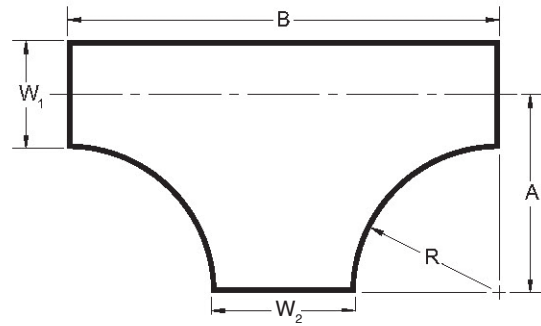
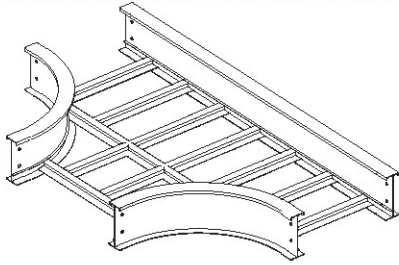
† - Not available in 9 series.

See Next / Opposite Page For Ordering Information.

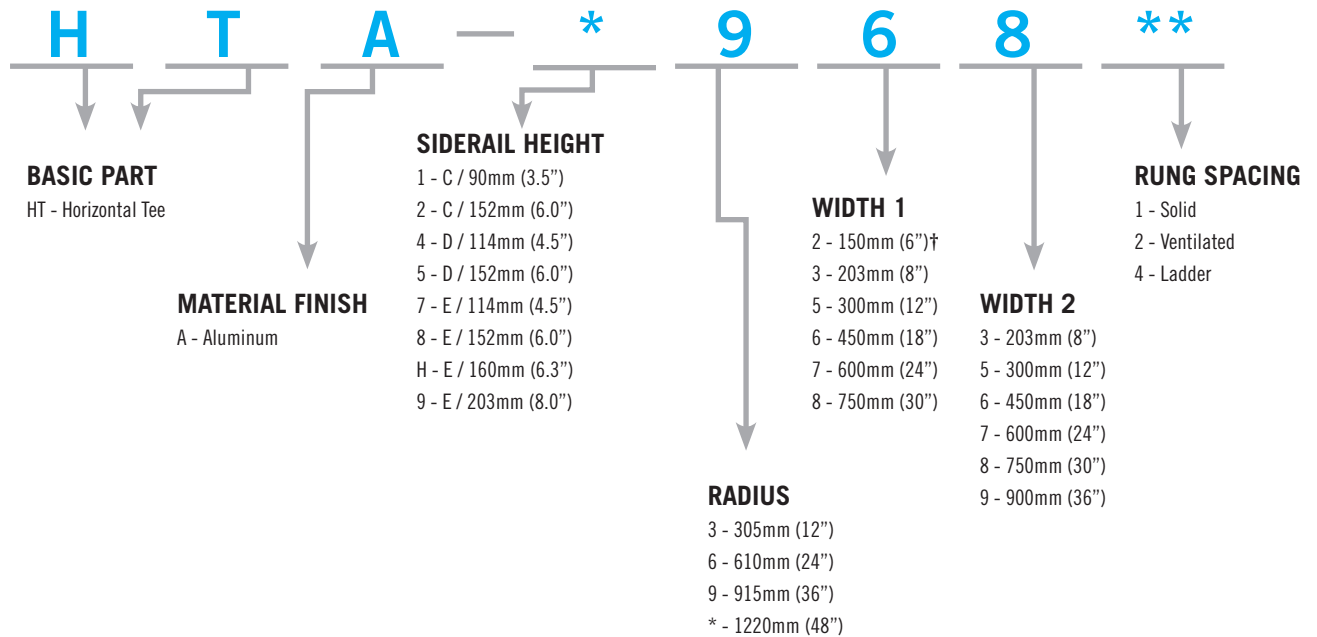
HORIZONTAL REDUCING TEE

TRAY WIDTH			305mm / 12" RADIUS				610mm / 24" RADIUS				915mm / 36" RADIUS				1220mm / 48" RADIUS			
W1	W2	CATALOGUE #	A		B		A		B		A		B		A		B	
mm (in)	mm (in)	* SIDERAIL HEIGHT ** RUNG SPACING	mm (in)	mm (in)	mm (in)	mm (in)	mm (in)	mm (in)	mm (in)	mm (in)	mm (in)	mm (in)	mm (in)	mm (in)	mm (in)	mm (in)	mm (in)	mm (in)
203 (6)	150 (6)	HTA-(*)332(**)	410.5 (16.2)	767 (30.2)	716 (28.2)	1377 (54.2)	1020.5 (40.2)	1987 (78.2)	1325 (52.2)	HTA-(*)32(**)	1325 (52.2)	2597 (102.2)	2597 (102.2)	2597 (102.2)	2597 (102.2)	2597 (102.2)	2597 (102.2)	2597 (102.2)
300 (12)	150 (6)	HTA-(*)352(**)	459 (18.1)	767 (30.2)	764 (30.1)	1377 (54.2)	1069 (42.1)	1987 (78.2)	1373.5 (54.1)	HTA-(*)52(**)	1373.5 (54.1)	2597 (102.2)	2597 (102.2)	2597 (102.2)	2597 (102.2)	2597 (102.2)	2597 (102.2)	2597 (102.2)
300 (12)	203 (8)	HTA-(*)353(**)	459 (18.1)	820 (32.3)	764 (30.1)	1430 (56.3)	1069 (42.1)	2040 (80.3)	1373.5 (54.1)	HTA-(*)53(**)	1373.5 (54.1)	2650 (104.3)	2650 (104.3)	2650 (104.3)	2650 (104.3)	2650 (104.3)	2650 (104.3)	2650 (104.3)
450 (18)	150 (6)	HTA-(*)362(**)	534 (21.0)	767 (30.2)	839 (33.0)	1377 (54.2)	1144 (45.0)	1987 (78.2)	1448.5 (57.0)	HTA-(*)62(**)	1448.5 (57.0)	2597 (102.2)	2597 (102.2)	2597 (102.2)	2597 (102.2)	2597 (102.2)	2597 (102.2)	2597 (102.2)
450 (18)	203 (8)	HTA-(*)363(**)	534 (21.0)	820 (32.3)	839 (33.0)	1430 (56.3)	1144 (45.0)	2040 (80.3)	1448.5 (57.0)	HTA-(*)63(**)	1448.5 (57.0)	2650 (104.3)	2650 (104.3)	2650 (104.3)	2650 (104.3)	2650 (104.3)	2650 (104.3)	2650 (104.3)
450 (18)	300 (12)	HTA-(*)365(**)	534 (21.0)	917 (36.1)	839 (33.0)	1527 (60.1)	1144 (45.0)	2137 (84.1)	1448.5 (57.0)	HTA-(*)65(**)	1448.5 (57.0)	2747 (108.1)	2747 (108.1)	2747 (108.1)	2747 (108.1)	2747 (108.1)	2747 (108.1)	2747 (108.1)
600 (24)	150 (6)	HTA-(*)372(**)	609 (24.0)	767 (30.2)	914 (36.0)	1377 (54.2)	1219 (48.0)	1987 (78.2)	1523.5 (60.0)	HTA-(*)72(**)	1523.5 (60.0)	2597 (102.2)	2597 (102.2)	2597 (102.2)	2597 (102.2)	2597 (102.2)	2597 (102.2)	2597 (102.2)
600 (24)	203 (8)	HTA-(*)373(**)	609 (24.0)	820 (32.3)	914 (36.0)	1430 (56.3)	1219 (48.0)	2040 (80.3)	1523.5 (60.0)	HTA-(*)73(**)	1523.5 (60.0)	2650 (104.3)	2650 (104.3)	2650 (104.3)	2650 (104.3)	2650 (104.3)	2650 (104.3)	2650 (104.3)
600 (24)	300 (12)	HTA-(*)375(**)	609 (24.0)	917 (36.1)	914 (36.0)	1527 (60.1)	1219 (48.0)	2137 (84.1)	1523.5 (60.0)	HTA-(*)75(**)	1523.5 (60.0)	2747 (108.1)	2747 (108.1)	2747 (108.1)	2747 (108.1)	2747 (108.1)	2747 (108.1)	2747 (108.1)
600 (24)	450 (18)	HTA-(*)376(**)	609 (24.0)	1067 (42.0)	914 (36.0)	1677 (66.0)	1219 (48.0)	2287 (90.0)	1523.5 (60.0)	HTA-(*)76(**)	1523.5 (60.0)	2897 (114.1)	2897 (114.1)	2897 (114.1)	2897 (114.1)	2897 (114.1)	2897 (114.1)	2897 (114.1)
750 (30)	150 (6)	HTA-(*)382(**)	684 (26.9)	767 (30.2)	989 (38.9)	1377 (54.2)	1294 (50.9)	1987 (78.2)	1598.5 (62.9)	HTA-(*)82(**)	1598.5 (62.9)	2597 (102.2)	2597 (102.2)	2597 (102.2)	2597 (102.2)	2597 (102.2)	2597 (102.2)	2597 (102.2)
750 (30)	203 (8)	HTA-(*)383(**)	684 (26.9)	820 (32.3)	989 (38.9)	1430 (56.3)	1294 (50.9)	2040 (80.3)	1598.5 (62.9)	HTA-(*)83(**)	1598.5 (62.9)	2650 (104.3)	2650 (104.3)	2650 (104.3)	2650 (104.3)	2650 (104.3)	2650 (104.3)	2650 (104.3)
750 (30)	300 (12)	HTA-(*)385(**)	684 (26.9)	917 (36.1)	989 (38.9)	1527 (60.1)	1294 (50.9)	2137 (84.1)	1598.5 (62.9)	HTA-(*)85(**)	1598.5 (62.9)	2747 (108.1)	2747 (108.1)	2747 (108.1)	2747 (108.1)	2747 (108.1)	2747 (108.1)	2747 (108.1)
750 (30)	450 (18)	HTA-(*)386(**)	684 (26.9)	1067 (42.0)	989 (38.9)	1677 (66.0)	1294 (50.9)	2287 (90.0)	1598.5 (62.9)	HTA-(*)86(**)	1598.5 (62.9)	2897 (114.1)	2897 (114.1)	2897 (114.1)	2897 (114.1)	2897 (114.1)	2897 (114.1)	2897 (114.1)
750 (30)	600 (24)	HTA-(*)387(**)	684 (26.9)	1217 (47.9)	989 (38.9)	1827 (71.9)	1294 (50.9)	2437 (95.9)	1598.5 (62.9)	HTA-(*)87(**)	1598.5 (62.9)	3047 (120.0)	3047 (120.0)	3047 (120.0)	3047 (120.0)	3047 (120.0)	3047 (120.0)	3047 (120.0)
900 (36)	150 (6)	HTA-(*)392(**)	759 (29.9)	767 (30.2)	1064 (41.9)	1377 (54.2)	1369 (53.9)	1987 (78.2)	1673.5 (65.9)	HTA-(*)92(**)	1673.5 (65.9)	2597 (102.2)	2597 (102.2)	2597 (102.2)	2597 (102.2)	2597 (102.2)	2597 (102.2)	2597 (102.2)
900 (36)	203 (8)	HTA-(*)393(**)	759 (29.9)	820 (32.3)	1064 (41.9)	1430 (56.3)	1369 (53.9)	2040 (80.3)	1673.5 (65.9)	HTA-(*)93(**)	1673.5 (65.9)	2650 (104.3)	2650 (104.3)	2650 (104.3)	2650 (104.3)	2650 (104.3)	2650 (104.3)	2650 (104.3)
900 (36)	300 (12)	HTA-(*)395(**)	759 (29.9)	917 (36.1)	1064 (41.9)	1527 (60.1)	1369 (53.9)	2137 (84.1)	1673.5 (65.9)	HTA-(*)95(**)	1673.5 (65.9)	2747 (108.1)	2747 (108.1)	2747 (108.1)	2747 (108.1)	2747 (108.1)	2747 (108.1)	2747 (108.1)
900 (36)	450 (18)	HTA-(*)396(**)	759 (29.9)	1067 (42.0)	1064 (41.9)	1677 (66.0)	1369 (53.9)	2287 (90.0)	1673.5 (65.9)	HTA-(*)96(**)	1673.5 (65.9)	2897 (114.1)	2897 (114.1)	2897 (114.1)	2897 (114.1)	2897 (114.1)	2897 (114.1)	2897 (114.1)
900 (36)	600 (24)	HTA-(*)397(**)	759 (29.9)	1217 (47.9)	1064 (41.9)	1827 (71.9)	1369 (53.9)	2437 (95.9)	1673.5 (65.9)	HTA-(*)97(**)	1673.5 (65.9)	3047 (120.0)	3047 (120.0)	3047 (120.0)	3047 (120.0)	3047 (120.0)	3047 (120.0)	3047 (120.0)
900 (36)	750 (30)	HTA-(*)398(**)	759 (29.9)	1367 (53.8)	1064 (41.9)	1977 (77.8)	1369 (53.9)	2587 (101.9)	1673.5 (65.9)	HTA-(*)98(**)	1673.5 (65.9)	5027 (197.9)	5027 (197.9)	5027 (197.9)	5027 (197.9)	5027 (197.9)	5027 (197.9)	5027 (197.9)

HORIZONTAL EXPANDING TEE



To complete catalogue number insert the appropriate prefixes (2) in place of asterisks.



† - Not available in 9 series.

See Next / Opposite Page For Ordering Information.

HORIZONTAL EXPANDING TEE

TRAY WIDTH		305mm / 12" RADIUS				610mm / 24" RADIUS				915mm / 36" RADIUS				1220 mm / 48" RADIUS					
W1	W2	CATALOGUE #		A		B		CATALOGUE #		A		B		CATALOGUE #		A		B	
		mm (in)	(in)	mm	(in)	mm	(in)	mm	(in)	mm	(in)	mm	(in)	mm	(in)	mm	(in)	mm	(in)
150 (6)	203 (8)	HTA-(*)*23(**)	384 (15.1)	820 (32.3)	689 (27.1)	1430 (56.3)	HTA-(*)*23(**)	994 (39.1)	2040 (80.3)	HTA-(*)*23(**)	1299 (51.1)	2610 (102.8)	HTA-(*)*23(**)	1299 (51.1)	2610 (102.8)				
150 (6)	300 (12)	HTA-(*)*25(**)	384 (15.1)	917 (36.1)	689 (27.1)	1527 (60.1)	HTA-(*)*25(**)	994 (39.1)	2137 (84.1)	HTA-(*)*25(**)	1299 (51.1)	2707 (106.6)	HTA-(*)*25(**)	1299 (51.1)	2707 (106.6)				
150 (6)	450 (18)	HTA-(*)*26(**)	384 (15.1)	1067 (42.0)	689 (27.1)	1677 (66.0)	HTA-(*)*26(**)	994 (39.1)	2287 (90.0)	HTA-(*)*26(**)	1299 (51.1)	2857 (112.5)	HTA-(*)*26(**)	1299 (51.1)	2857 (112.5)				
150 (6)	600 (24)	HTA-(*)*27(**)	384 (15.1)	1217 (47.9)	689 (27.1)	1827 (71.9)	HTA-(*)*27(**)	994 (39.1)	2437 (95.9)	HTA-(*)*27(**)	1299 (51.1)	3007 (118.4)	HTA-(*)*27(**)	1299 (51.1)	3007 (118.4)				
150 (6)	750 (30)	HTA-(*)*28(**)	384 (15.1)	1367 (53.8)	689 (27.1)	1977 (77.8)	HTA-(*)*28(**)	994 (39.1)	2587 (101.9)	HTA-(*)*28(**)	1299 (51.1)	3157 (124.3)	HTA-(*)*28(**)	1299 (51.1)	3157 (124.3)				
150 (6)	900 (36)	HTA-(*)*29(**)	384 (15.1)	1517 (59.7)	689 (27.1)	2127 (83.7)	HTA-(*)*29(**)	994 (39.1)	2737 (107.8)	HTA-(*)*29(**)	1299 (51.1)	3307 (130.2)	HTA-(*)*29(**)	1299 (51.1)	3307 (130.2)				
203 (8)	300 (12)	HTA-(*)*35(**)	410.5 (16.2)	917 (36.1)	716 (28.2)	1527 (60.1)	HTA-(*)*35(**)	1020.5 (40.2)	2137 (84.1)	HTA-(*)*35(**)	1325.5 (52.2)	2707 (106.6)	HTA-(*)*35(**)	1325.5 (52.2)	2707 (106.6)				
203 (8)	450 (18)	HTA-(*)*36(**)	410.5 (16.2)	1067 (42.0)	716 (28.2)	1677 (66.0)	HTA-(*)*36(**)	1020.5 (40.2)	2287 (90.0)	HTA-(*)*36(**)	1325.5 (52.2)	2857 (112.5)	HTA-(*)*36(**)	1325.5 (52.2)	2857 (112.5)				
203 (8)	600 (24)	HTA-(*)*37(**)	410.5 (16.2)	1217 (47.9)	716 (28.2)	1827 (71.9)	HTA-(*)*37(**)	1020.5 (40.2)	2437 (95.9)	HTA-(*)*37(**)	1325.5 (52.2)	3007 (118.4)	HTA-(*)*37(**)	1325.5 (52.2)	3007 (118.4)				
203 (8)	750 (30)	HTA-(*)*38(**)	410.5 (16.2)	1367 (53.8)	716 (28.2)	1977 (77.8)	HTA-(*)*38(**)	1020.5 (40.2)	2587 (101.9)	HTA-(*)*38(**)	1325.5 (52.2)	3157 (124.3)	HTA-(*)*38(**)	1325.5 (52.2)	3157 (124.3)				
203 (8)	900 (36)	HTA-(*)*39(**)	410.5 (16.2)	1517 (59.7)	716 (28.2)	2127 (83.7)	HTA-(*)*39(**)	1020.5 (40.2)	2737 (107.8)	HTA-(*)*39(**)	1325.5 (52.2)	3307 (130.2)	HTA-(*)*39(**)	1325.5 (52.2)	3307 (130.2)				
300 (12)	450 (18)	HTA-(*)*56(**)	459 (18.1)	1067 (42.0)	764 (30.1)	1677 (66.0)	HTA-(*)*56(**)	1069 (42.1)	2287 (90.0)	HTA-(*)*56(**)	1374 (54.1)	2857 (112.5)	HTA-(*)*56(**)	1374 (54.1)	2857 (112.5)				
300 (12)	600 (24)	HTA-(*)*57(**)	459 (18.1)	1217 (47.9)	764 (30.1)	1827 (71.9)	HTA-(*)*57(**)	1069 (42.1)	2437 (95.9)	HTA-(*)*57(**)	1374 (54.1)	3007 (118.4)	HTA-(*)*57(**)	1374 (54.1)	3007 (118.4)				
300 (12)	750 (30)	HTA-(*)*58(**)	459 (18.1)	1367 (53.8)	764 (30.1)	1977 (77.8)	HTA-(*)*58(**)	1069 (42.1)	2587 (101.9)	HTA-(*)*58(**)	1374 (54.1)	3157 (124.3)	HTA-(*)*58(**)	1374 (54.1)	3157 (124.3)				
300 (12)	900 (36)	HTA-(*)*59(**)	459 (18.1)	1517 (59.7)	764 (30.1)	2127 (83.7)	HTA-(*)*59(**)	1069 (42.1)	2737 (107.8)	HTA-(*)*59(**)	1374 (54.1)	3307 (130.2)	HTA-(*)*59(**)	1374 (54.1)	3307 (130.2)				
450 (18)	600 (24)	HTA-(*)*67(**)	534 (21.0)	1217 (47.9)	839 (33.0)	1827 (71.9)	HTA-(*)*67(**)	1144 (45.0)	2437 (95.9)	HTA-(*)*67(**)	1449 (57.0)	3007 (118.4)	HTA-(*)*67(**)	1449 (57.0)	3007 (118.4)				
450 (18)	750 (30)	HTA-(*)*68(**)	534 (21.0)	1367 (53.8)	839 (33.0)	1977 (77.8)	HTA-(*)*68(**)	1144 (45.0)	2587 (101.9)	HTA-(*)*68(**)	1449 (57.0)	3157 (124.3)	HTA-(*)*68(**)	1449 (57.0)	3157 (124.3)				
450 (18)	900 (36)	HTA-(*)*69(**)	534 (21.0)	1517 (59.7)	839 (33.0)	2127 (83.7)	HTA-(*)*69(**)	1144 (45.0)	2737 (107.8)	HTA-(*)*69(**)	1449 (57.0)	3307 (130.2)	HTA-(*)*69(**)	1449 (57.0)	3307 (130.2)				
600 (18)	750 (30)	HTA-(*)*78(**)	609 (24.0)	1367 (53.8)	914 (36.0)	1977 (77.8)	HTA-(*)*78(**)	1219 (48.0)	2587 (101.9)	HTA-(*)*78(**)	1524 (60.0)	3157 (124.3)	HTA-(*)*78(**)	1524 (60.0)	3157 (124.3)				
600 (18)	900 (36)	HTA-(*)*79(**)	609 (24.0)	1517 (59.7)	914 (36.0)	2127 (83.7)	HTA-(*)*79(**)	1219 (48.0)	2737 (107.8)	HTA-(*)*79(**)	1524 (60.0)	3307 (130.2)	HTA-(*)*79(**)	1524 (60.0)	3307 (130.2)				
750 (30)	900 (36)	HTA-(*)*89(**)	684 (26.9)	1517 (59.7)	989 (38.9)	2127 (83.7)	HTA-(*)*89(**)	1294 (50.9)	2737 (107.8)	HTA-(*)*89(**)	1599 (63.0)	3307 (130.2)	HTA-(*)*89(**)	1599 (63.0)	3307 (130.2)				